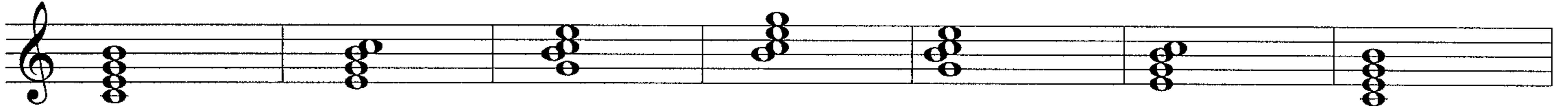


# 240 7TH CHORDS

## FROM 5 BASIC QUALITIES

THE NUMBERS REPRESENT THE NOTES OF THE MAJOR SCALE FROM WHICH THE CHORD IS MADE. PRACTICE HANDS TOGETHER  $\frac{1}{2}$  IN ALL TWELVE KEYS. 5 QUALITIES X FOUR INVERTED POSITIONS X TWELVE KEYS = 240 CHORDS. USE THE SUSTAIN PEDAL WHILE LIFTING TO THE NEXT CHORD.

MAJOR - 1 3 5 7



ROOT POSITION

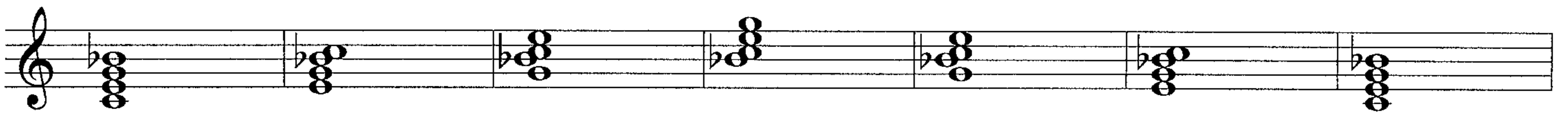
FIRST INVERSION

SECOND INVERSION

THIRD INVERSION

PLAY ALL CHORDS W/  
BOTH HANDS

DOMINANT - 1 3 5  $\flat$ 7



MINOR - 1  $\flat$ 3 5  $\flat$ 7



HALF DIMINISHED - 1  $\flat$ 3  $\flat$ 5  $\flat$ 7



FULLY DIMINISHED - 1  $\flat$ 3  $\flat$ 5  $\flat\flat$ 7

